

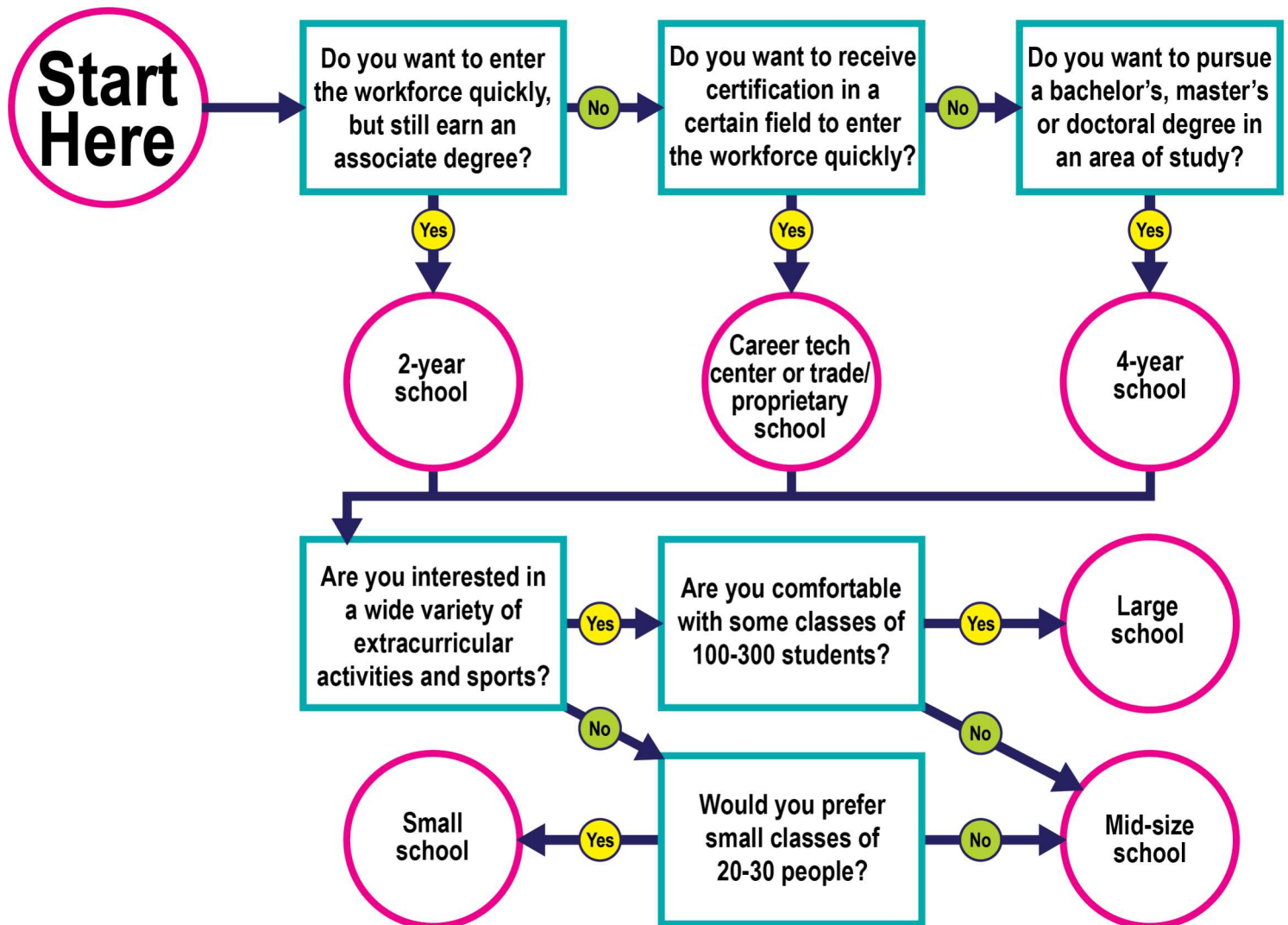


COLLEGE FAIR WORKSHEET

PICKING A COLLEGE TYPE

Choosing the right school can be a difficult task. Use this chart to help you decide what type of school is right for you. Read each question and think about your interests and priorities. Answer 'yes' or 'no' and follow the corresponding arrows to reveal the type of school that may best meet your needs.

Once you've decided on the type of school you wish to attend, check out a college fair to learn more about what specific Oklahoma colleges have to offer. Use the chart on the back to compare at least three schools you're interested in attending.



COLLEGE FAIR QUESTIONS

SCHOOL NAME:

SCHOOL NAME:

SCHOOL NAME:

| | | | |
|--|--|--|--|
| Do you offer my planned major? | | | |
| Do you offer academic counseling and support services? | | | |
| Does your campus help students find internships or jobs in their chosen fields? | | | |
| What's your average class size? | | | |
| What types of extracurricular activities do you offer? | | | |
| What scholarships do you offer for incoming freshmen? What's the application deadline? | | | |
| What are your admission requirements? | | | |
| What's your enrollment deadline? | | | |